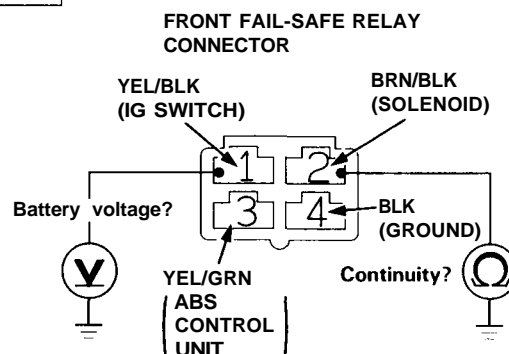
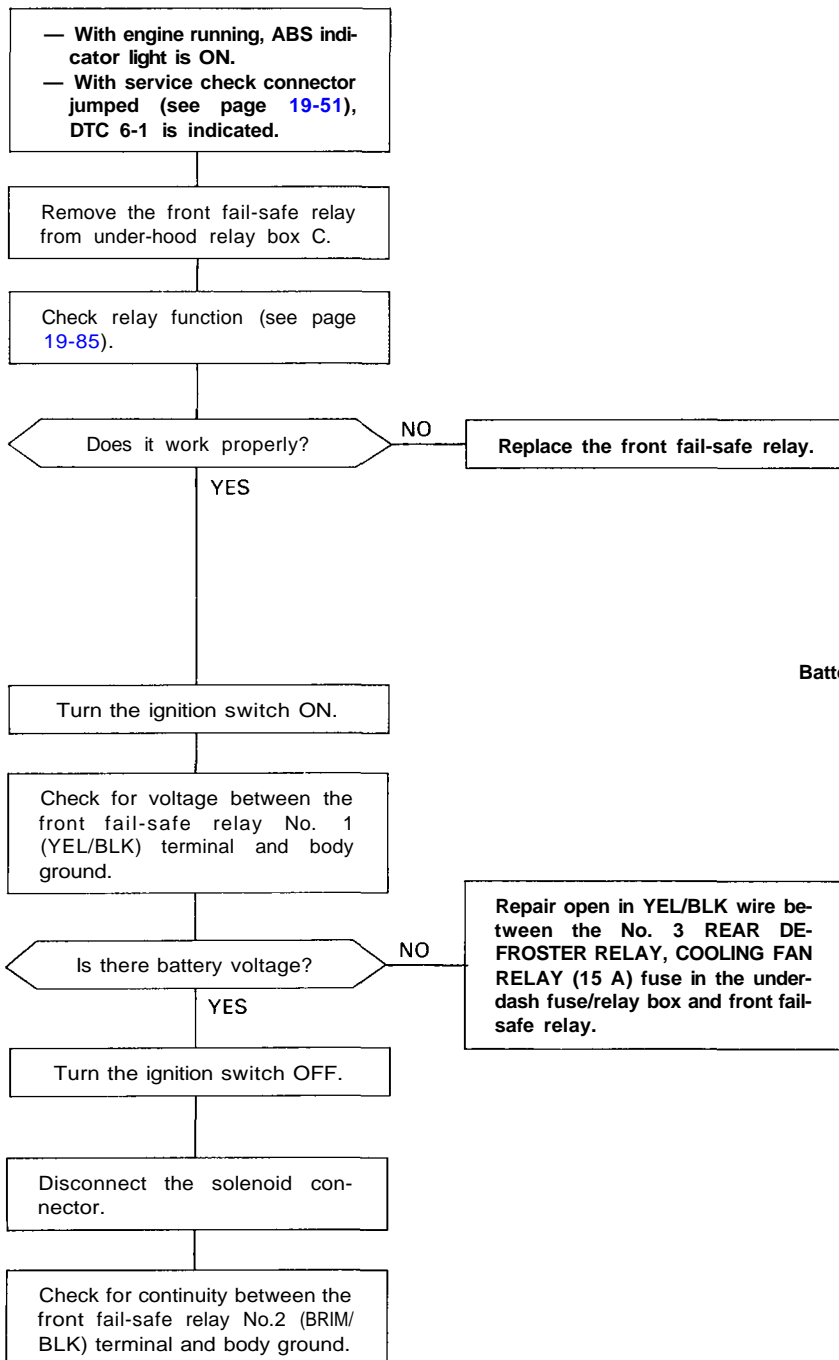


Diagnostic Trouble Code (DTC) 6-1: Front Fail-Safe Relay Circuit

CAUTION: Use only the digital multimeter to check the system.

Pre-test steps:

- Check ABS B1 (15 A) fuse and ABS B3 (15 A) fuse in the under-hood fuse/relay box.
- Check for loose under-hood fuse/relay box connectors.



View from terminal side.

(To page 19-66)

(cont'd)

Troubleshooting

Flowcharts (cont'd)

(Front page 19-65)

Is there continuity?

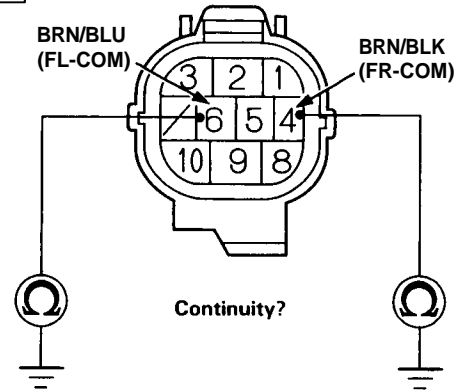
YES

Repair short in BRN/BLK wire between the solenoid and front fail-safe relay.

NO

Check each wire for continuity between the solenoid connector terminals and body ground
No.4 (BRN/BLK): Front Right
No.6 (BRN/BLU): Front Left

SOLENOID CONNECTOR



Is there continuity?

YES

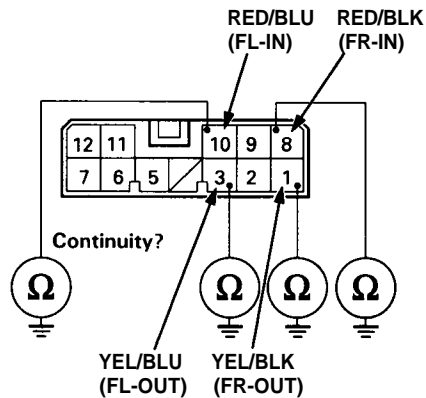
Faulty solenoid (short).
Replace the modulator unit.

NO

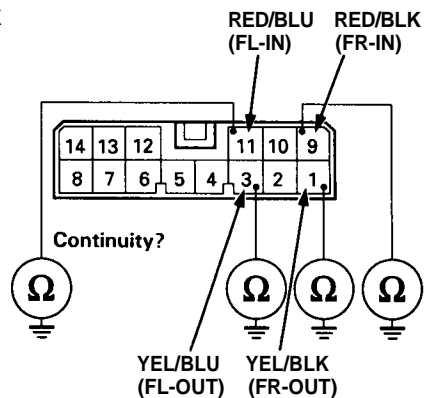
Disconnect the 12P (cars with TCS: 14P) connector from the ABS control unit.

Check each wire for continuity between the ABS control unit and body ground.
RED/BLK: Front Right Inlet
YEL/BLK: Front Right Outlet
RED/BLU: Front Left Inlet
YEL/BLU: Front Left Outlet

Cars without TCS
12P CONNECTOR



Cars with TCS
14P CONNECTOR



View from ABS control unit terminal side.

Is there continuity?

YES

Repair short in wire between the solenoid and ABS control unit:
RED/BLK: Front Right Inlet
YEL/BLK: Front Right Outlet
RED/BLU: Front Left Inlet
YEL/BLU: Front Left Outlet

NO

(To page 19-67)

(From page 19-66)

Remove the rear fail-safe relay from under-hood relay box C.

Disconnect the 18P (cars with TCS: 20P) connector from the ABS control unit.

Check for continuity between the No. 17 (cars with TCS: No. 19) (YEL/GRN) terminal and body ground.

Is there continuity?

YES

Repair short in YEL/GRN wire between the ABS control unit and front fail-safe relay.

NO

Reinstall the front fail-safe relay.

Turn the ignition switch ON.

Check for voltage between the No. 17 (cars with TCS: No. 19) (YEL/GRN) terminal and body ground.

Is there battery voltage?

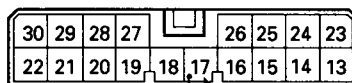
NO

Repair open in YEL/GRN wire between the front fail-safe relay and ABS control unit.

YES

Check for loose ABS control unit connectors. If necessary, substitute a known-good ABS control unit and recheck.

Cars without TCS
18P CONNECTOR

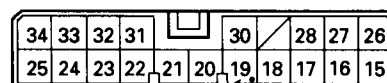


Continuity?



YEL/GRN (FSR)

Cars with TCS
20P CONNECTOR



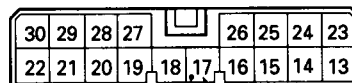
YEL/GRN (FSR)



Continuity?

View from ABS control unit terminal side.

Cars without TCS
18P CONNECTOR

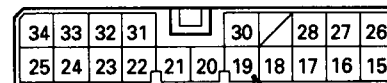


Battery voltage?



YEL/GRN (FSR)

Cars with TCS
20P CONNECTOR



Battery voltage?



YEL/GRN (FSR)

View from ABS control unit terminal side.

(cont'd)